

SETUP MANUAL



DP100FX4

FUNAI

See the Online Owner's Manual for details:
www.funaiamerica.com

- Step 1 Position your camera to read the QR code below and let it scan or visit by web www.funaiamerica.com (You need a QR-code app and a smartphone or tablet equipped with a camera.)
Step 2 Select Download.
Step 3 Type in the Model # "DP100FX4", and click "Search".
Step 4 Select the Manual, and click on "Download".



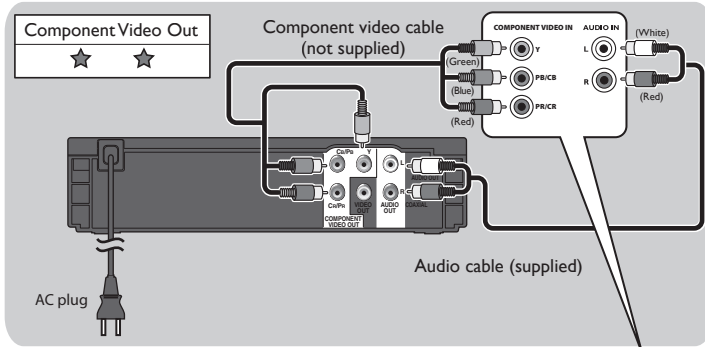
FUNAI is a registered trademark of Funai Electric Co., Ltd. and may not be used in any way without the express written consent of Funai.

© 2013 Funai Electric Co., Ltd.
Printed in China
E6N0AUH
2VMN00041 ★★★★★

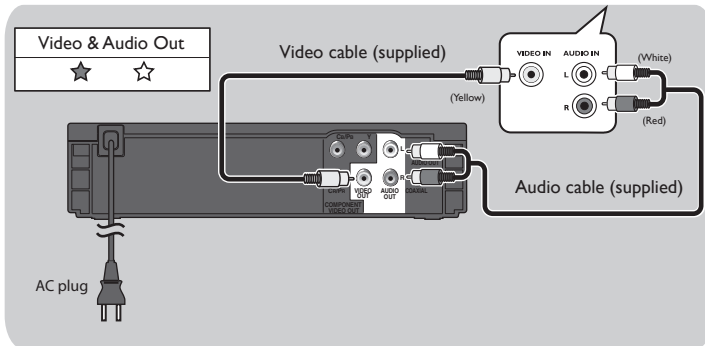


1 CONNECTIONS

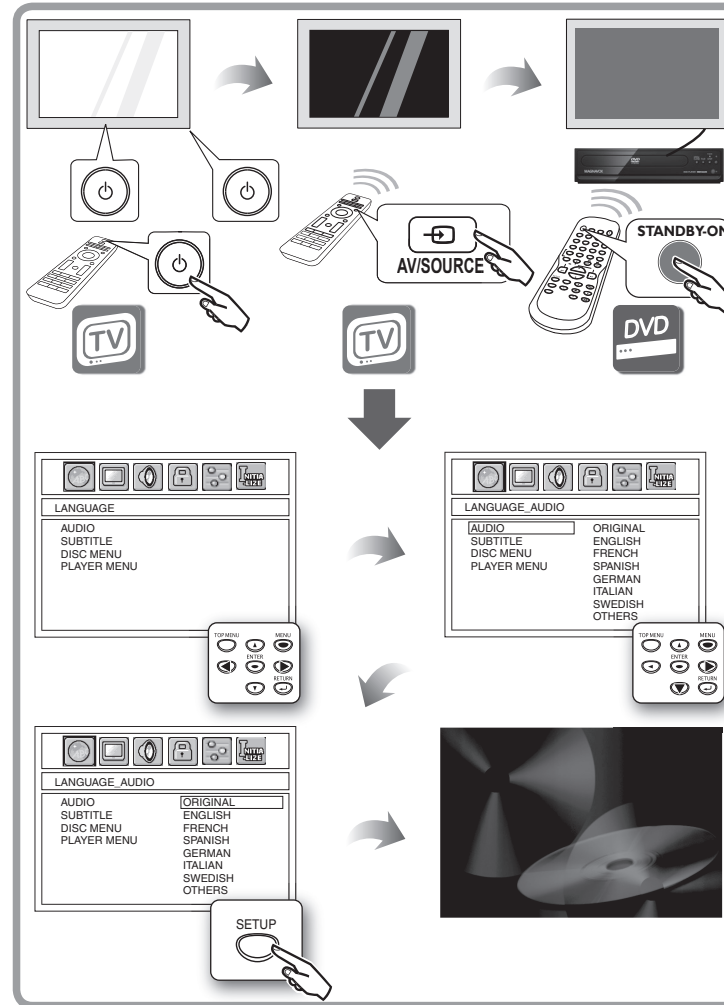
Connection to the TV



or



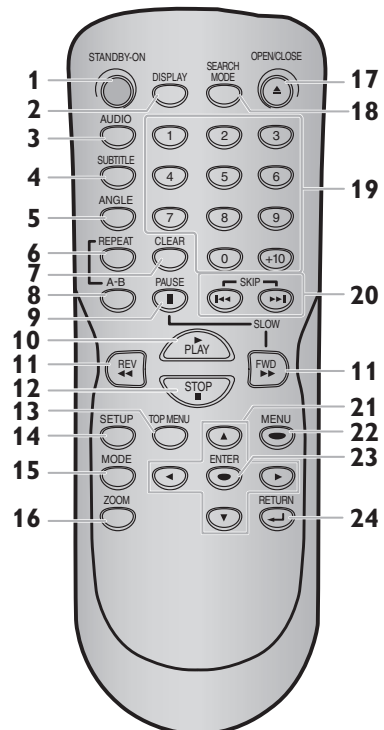
2 INITIAL SETUP



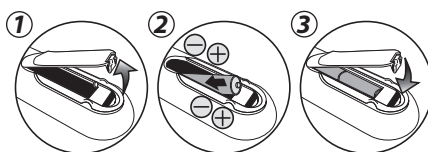
TROUBLESHOOTING

Problem	Tip
No power.	<ul style="list-style-type: none"> Check if the AC power cord is properly connected. Unplug the AC power cord from the AC outlet, wait for 5-10 seconds and then plug it in again.
No sound or picture.	<ul style="list-style-type: none"> Check if the TV is switched On. Check the TV Input or Source video signal. Check the Audio / Video cable connections to the TV.
Distorted picture	<ul style="list-style-type: none"> Sometimes a small amount of picture distortion may appear. This is not a malfunction. Connect the unit directly to the TV. Set "PROGRESSIVE" correctly in "DISPLAY" menu. Turn it On only if your TV has progressive scan and you are using the component video connection between the unit and the TV. Disable progressive scan for all other connections. Press and hold [▶ (PLAY)] on the front panel for 5 seconds to change back to default output (not progressive scan).
Completely distorted picture or black / white picture with DVD	<ul style="list-style-type: none"> Connect this unit directly to the TV. Make sure the disc is compatible with the unit.
No sound or distorted sound	<ul style="list-style-type: none"> Adjust the volume. Check that the speakers are connected correctly.
No audio at digital output	<ul style="list-style-type: none"> Check the digital connections. Check if the audio format of the selected audio language matches your receiver capabilities.
No DTS audio is output.	<ul style="list-style-type: none"> This unit does not support DTS audio. This is not a malfunction.
Picture freezes momentarily during playback.	<ul style="list-style-type: none"> Check the disc for fingerprints / dirty and clean with a soft cloth wiping from center to edge.
Disc cannot be played back.	<ul style="list-style-type: none"> Clean the disc. Ensure the disc is inserted in correct direction. Check if the disc is defective by trying another disc. Cancel the parental lock or change the control level. Insert a correct disc that plays back on this unit. If unit moved from cold to warm temp then possible moisture inside unit can cause no playback. Let unit set in warm area for 1-2 hours and try again.
No return to start-up screen when disc is removed.	<ul style="list-style-type: none"> Reset the unit by switching Off the unit, then On again. If still not working perform a hard reset by unplugging the AC power cord and then plug it back in after 1 minute.
The unit does not respond to the remote control.	<ul style="list-style-type: none"> Aim the remote control directly at the front panel sensor or reduce the distance to the front panel. In the Remote re-insert the batteries with their polarities (+ / - signs) as indicated or replace the Remote batteries. Press and hold any button on Remote control toward a digital or telephone camera. The Remote control is working if you confirm a blinking infrared light through the camera.

REMOTE CONTROL



INSERT BATTERIES
Install 2 AA (1.5V) batteries



	ENGLISH	ESPAÑOL
1.	Press to turn On the unit or to switch the unit into Standby mode. (To completely turn Off the unit, you must Unplug the AC power cord.)	Pulse esta tecla para encender la unidad o para dejarla en el modo de espera. (Para apagar completamente la unidad, debe desconectar el cable de alimentación de CA.)
2.	To display the Current Disc mode.	Para mostrar el modo de disco actual.
3.	To select Audio Language . (DVD) To select Sound mode. (CD)	Para seleccionar lenguaje de audio. (DVD) Para seleccionar modo de sonido. (CD)
4.	To select Subtitle Language on a disc. (DVD)	Para seleccionar el idioma de subtítulos de un disco. (DVD)
5.	To select Camera Angles on a disc. (DVD)	Para seleccionar los ángulos de la cámara en un disco. (DVD)
6.	To Play back Repeatedly.	Para reproducir repetidamente.
7.	To Remove Status Number in program input. To Clear the numbers entered incorrectly. To Cancel the Point for A-B Repeat .	Para eliminar el N° de estado en la entrada de programa. Para borrar los números mal entrados. Para borrar el punto para la repetición A-B.
8.	To Repeat your chosen Point between A and B.	Para repetir entre su punto A y B seleccionado.
9.	To Pause disc playback. To Advance playback one frame at a time. (DVD)	Para hacer una pausa en la reproducción. Para avanzar la reproducción un cuadro cada vez. (DVD)
10.	To Start playback or Resume playback. To turn On the unit.	Para iniciar o reanudar la reproducción. Para encender la unidad.
11.	To Search Forward / Backward through a disc. To begin Slow Forward playback in the Pause mode. (DVD)	Para buscar en avance / retroceso por un disco. Para comenzar la reproducción de avance lento en el modo de pausa. (DVD)
12.	To Stop playback.	Para parar la reproducción.
13.	To call up the Top menu on a disc. (DVD)	Para llamar el menú inicial en un disco. (DVD)

	ENGLISH	ESPAÑOL
14.	To call up the Setup menu.	Para recuperar el menú de configuración.
15.	To arrange the playing order or play randomly. To set Black level On/Off .	Para disponer el orden de reproducción o la reproducción aleatoria. Para activar/desactivar el nivel del negro.
16.	To Magnify part of a picture. (DVD)	Para agrandar la parte de una imagen. (DVD)
17.	To Open or Close the disc tray. To turn On the unit.	Para abrir o cerrar la bandeja del disco. Para encender la unidad.
18.	To Search chapter, title, tracks or time.	Para buscar un capítulo, título, pistas, o tiempo.
19.	To Enter values in the input field. To Select chapter, title and track directly.	Para especificar valores en el campo de entrada. Para seleccionar capítulo, título y pista directamente.
20.	To Skip chapters, titles and tracks.	Para saltar capítulos, títulos y pistas.
21.	To Move the cursor and determine its position.	Para mover el cursor y determinar la posición.
22.	To Call up the menu on a disc. (DVD)	Para llamar el menú en un disco. (DVD)
23.	To Select items or settings.	Para seleccionar opciones o valores de configuración.
24.	To Return to the previously displayed menu screen.	Para volver al menú o pantalla anteriormente visualizado.

If you have any questions or issues with our product, please refer to the "TROUBLESHOOTING" section of this "SETUP MANUAL", or visit our website for the Online Owner's Manual at www.funaiamerica.com. If additional support is required please contact our Customer Service line at 1-877-393-8624.

See the Online Owner's Manual for details: www.funaiamerica.com

SERVICING

- Please refer to relevant topics on "Troubleshooting Guide" in the Online Owner's Manual before returning the product.
- If this unit becomes inoperative, do not try to correct the problem by yourself. There are no user-serviceable parts inside. Eject the disc (if possible), place the unit into the standby mode, unplug the power plug, and please contact: 1-877-393-8624 or visit: www.funaiamerica.com/support

SAFETY INSTRUCTIONS

The model and serial numbers of this unit may be found on the cabinet. You should record and retain those numbers for future reference.

Model No.:
Serial No.:

WARNING:

TO REDUCE THE RISK OF FIRE OR ELECTRIC SHOCK, DO NOT EXPOSE THIS APPARATUS TO RAIN OR MOISTURE. APPARATUS SHALL NOT BE EXPOSED TO DRIPPING OR SPLASHING AND NO OBJECTS FILLED WITH LIQUIDS, SUCH AS VASES, SHALL BE PLACED ON THE APPARATUS.

CAUTION
RISK OF ELECTRIC SHOCK
DO NOT OPEN

CAUTION:
TO REDUCE THE RISK OF ELECTRIC SHOCK, DO NOT REMOVE COVER (OR BACK). NO USER SERVICEABLE PARTS INSIDE. REFER SERVICING TO QUALIFIED SERVICE PERSONNEL.

The important note and rating are located on the rear or bottom of the cabinet.

The lightning flash with arrowhead symbol, within an equilateral triangle, is intended to alert the user to the presence of uninsulated "dangerous voltage" within the product's enclosure that may be of sufficient magnitude to constitute a risk of electric shock to persons.

The exclamation point within an equilateral triangle is intended to alert the user to the presence of important operating and maintenance (servicing) instructions in the literature accompanying the appliance.

The symbol for CLASS II (Double Insulation)

IMPORTANT SAFETY INSTRUCTIONS

1. Read these instructions.
2. Keep these instructions.
3. Heed all warnings.
4. Follow all instructions.
5. Do not use this apparatus near water.
6. Clean only with dry cloth.
7. Do not block any ventilation openings. Install in accordance with the manufacturer's instructions.
8. Do not install near any heat sources such as radiators, heat registers, stoves, or other apparatus (including amplifiers) that produce heat.

INSTRUCCIONES DE SEGURIDAD

El modelo y el número de serie de esta unidad se pueden encontrar en la caja. Deberá anotar y guardar el modelo y el número de serie para consultarlos, si los necesita, en el futuro.

Número de modelo:
Número de serie:

ADVERTENCIA:

PARA REDUCIR EL RIESGO DE QUE SE PRODUZCA UN INCENDIO O SE RECIBA UNA DESCARGA ELÉCTRICA, NO EXPONGA ESTE APARATO A LA LLUVIA NI A LA HUMEDAD. NO SE DEBERÁ EXPONER EL APARATO NI A GOTERAS NI A SALPICADURAS, Y NO DEBERÁ COLOCARSE NINGÚN OBJETO QUE CONTENGAN LÍQUIDOS SOBRE EL APARATO, COMO POR EJEMPLO JARRONES.

CAUTION
RISK OF ELECTRIC SHOCK
DO NOT OPEN

AVISO:

PARA REDUCIR EL RIESGO DE SUFRIR UNA DESCARGA ELÉCTRICA NOQuite la cubierta (o el panel posterior), en el interior del aparato no hay piezas que deba manipular el usuario. Solicite el servicio de reparaciones al personal de servicio cualificado.

Las notas importantes y la calificación se encuentran ubicadas en la parte posterior o inferior del gabinete.

El símbolo del rayo con punta de flecha, en el interior de un triángulo equilátero, tiene la finalidad de avisar al usuario de la presencia de "tensión peligrosa" dentro de la caja del aparato que podría ser de suficiente intensidad como para constituir un riesgo para las personas en caso de que éstas recibiesen una descarga eléctrica.

El signo de exclamación dentro de un triángulo equilátero tiene la finalidad de avisar al usuario de la presencia de instrucciones de utilización y mantenimiento (servicio) en el material impreso que acompaña al aparato.

Símbolo de CLASE II (doble aislamiento)

IMPORTANTES INSTRUCCIONES DE SEGURIDAD

1. Lea estas instrucciones.
2. Conserve estas instrucciones.
3. Preste atención a las advertencias.
4. Siga todas las instrucciones.
5. No utilice este aparato cerca del agua.
6. Limpie el aparato sólo con un paño seco.
7. No obstruya ninguna de las ranuras de ventilación. Realice la instalación según las instrucciones del fabricante.

9. Do not defeat the safety purpose of the polarized or grounding-type plug. A polarized plug has two blades with one wider than the other. A grounding type plug has two blades and a third grounding prong. The wide blade or the third prong are provided for your safety. If the provided plug does not fit into your outlet, consult an electrician for replacement of the obsolete outlet.

10. Protect the power cord from being walked on or pinched particularly at plugs, convenience receptacles, and the point where they exit from the apparatus.

11. Only use attachments/accessories specified by the manufacturer.

12. Use only with the cart, stand, tripod, bracket, or table specified by the manufacturer, or sold with the apparatus. When a cart is used, use caution when moving the cart / apparatus combination to avoid injury from tip-over.



13. Unplug this apparatus during lightning storms or when unused for long periods of time.

14. Refer all servicing to qualified service personnel. Servicing is required when the apparatus has been damaged in any way, such as power-supply cord or plug is damaged, liquid has been spilled or objects have fallen into the apparatus, the apparatus has been exposed to rain or moisture, does not operate normally, or has been dropped.

FCC WARNING

This equipment may generate or use radio frequency energy. Changes or modifications to this equipment may cause harmful interference unless the modifications are expressly approved in the manual. The user could lose the authority to operate this equipment if an unauthorized change or modification is made.

RADIO-TV INTERFERENCE

This equipment has been tested and found to comply with the limits for a Class B digital device, pursuant to Part 15 of the FCC Rules. These limits are designed to provide reasonable protection against harmful interference in a residential installation. This equipment generates, uses, and can radiate radio frequency energy and, if not installed and used in accordance with the instructions, may cause harmful interference to radio communications. However, there is no guarantee that interference will not occur in a particular installation. If this equipment does cause harmful interference to radio or television reception, which can be determined by turning the equipment off and on, the user is encouraged to try to correct the interference by one or more of the following measures:

1. Reorient or relocate the receiving antenna.
2. Increase the separation between the equipment and receiver.
3. Connect the equipment into an outlet on a circuit different from that to which the receiver is connected.
4. Consult the dealer or an experienced radio / TV technician for help.

8. No instale el equipo cerca de elementos para calefaccionar tales como radiadores, rejillas de calefacción, estufas eléctricas u otros aparatos (incluidos amplificadores).

9. No desarme el dispositivo de seguridad del enchufe polarizado o con conexión a tierra. Un enchufe polarizado contiene dos clavijas, una más ancha que otra. Un enchufe con conexión a tierra contiene dos clavijas y una tercera clavija con conexión a tierra. La clavija ancha del enchufe polarizado o la clavija de conexión a tierra representan dispositivos de seguridad. Si el enchufe del aparato no entra en el tomacorriente, consulte con un electricista para reemplazar sus antiguos tomacorrientes.

10. Asegúrese de proteger el cable de alimentación de las pisadas o torsiones especialmente en la zona de la clavija, en el receptáculo y en el punto donde el cable sale del aparato.

11. Utilice únicamente los accesorios que especifica el fabricante.
12. Utilice únicamente el carro, atril, trípode, soporte o la mesa que especifica el fabricante o que se vendió junto con el aparato. Cuando utilice un carro, sea cuidadoso al trasladar el conjunto carro/aparato para evitar daños por caídas de objetos.



13. Desenchufe este aparato si hay tormentas eléctricas o durante largos períodos de inactividad.

14. Confíe el servicio técnico sólo a personal calificado. El servicio técnico es necesario cuando el aparato sufre algún tipo de daño, por ejemplo cuando se dañan los cables de suministro eléctrico o la clavija, cuando se derrama líquido o se caen objetos sobre el aparato, cuando se lo expone a la lluvia o a humedad, cuando no funciona adecuadamente o cuando se cae.

No coloque la unidad sobre un mueble que pueda volcar si algún niño o adulto lo inclina, empuja, se coloca encima o trepa por él. La caída de la unidad puede provocar lesiones graves e incluso la muerte.

El aparato no debe colocarse en una instalación empotrada (por ejemplo: una biblioteca o un estante) a menos que cuente con la adecuada ventilación. Asegúrese de dejar un espacio de 3,9 pulgadas (10 cm), o más, alrededor del aparato.

Nunca use un despolvador a gas en esta unidad.
El gas del interior de la unidad puede inflamarse y explotar.

Disconnect the AC plug to shut the unit off when trouble is found or not in use. The AC plug shall remain readily available.

CAUTION: Danger of explosion if battery is incorrectly replaced. Replace only with the same or equivalent type.
WARNING: Batteries (Battery pack or battery installed) shall not be exposed to excessive heat such as sunshine, fire or the like.

LASER SAFETY

This apparatus is classified as a CLASS 1 LASER PRODUCT. This apparatus employs a laser. Only a qualified service person should remove the cover or attempt to service this apparatus, due to possible eye injury.
CAUTION: Use of controls or adjustments or performance of procedures other than those specified herein may result in hazardous radiation exposure.



IMPORTANT COPYRIGHT INFORMATION

Unauthorized copying, broadcasting, public performance and lending of discs are prohibited. This item incorporates copy protection technology that is protected by U.S. patents and other intellectual property rights of Rovi Corporation. Reverse engineering and disassembly are prohibited.

Do not place the unit on the furniture that is capable of being tilted by a child and an adult leaning, pulling, standing or climbing on it. A falling unit can cause serious injury or even death.

This apparatus should not be placed in a built-in installation such as a bookcase or rack unless proper ventilation is provided. Make sure to leave a space of 3.9 inches (10cm) or more around this apparatus.

ENERGY STAR® is a joint program of the U.S. Environmental Protection Agency and the U.S. Department of Energy helping us all save money and protect the environment through energy efficient products and practices.

Never use a gas duster on this unit.

The gas trapped inside of this unit may cause ignition and explosion.

SUPPLIED ACCESSORIES

Remote Control (NB691UD / NB691UH)

Audio / video cables SETUP MANUAL

PLAYABLE DISCS

Type of media	Mark (logo)	Recorded signals
DVD-video		digital video (MPEG2)
DVD-RW DVD-R		
Audio CD		digital audio
CD-RW CD-R		digital audio

UNPLAYABLE DISCS

DVD-RAM DVD-audio CD-i
photo CD video CD DTS-CD
HD DVD super audio CD Blu-ray Disc™
DVD with region codes other than 1 or ALL
DVD-ROM for personal computers
CD-ROM for personal computers

SPECIFICATIONS

General	
Signal system	NTSC Color
Power requirements	120V AC +/- 10 %, 60 Hz +/- 0.5 %
Power consumption	7 W (standby: 0.9 W)
Dimensions (width x height x depth)	8.3 x 2.0 x 9.7 inches (210 x 50 x 245 mm)
Weight	1.77 lbs. (0.80 kg)
Operating temperature	41°F (5°C) to 104°F (40°C)
Operating humidity	Less than 80 % (no condensation)

Connection Specifics	
Audio output (Analog) (RCA jack x 2)	L/R: 2Vrms (output impedance: more than 1kΩ)
Video output (RCA jack x 1)	1Vp-p (75Ω)
Component video output (RCA jack x 3)	Y: 1Vp-p (75Ω) PB/CB: 700mVp-p (75Ω) PR/CR: 700mVp-p (75Ω)
Coaxial digital audio output (RCA jack x 1)	500mVp-p (75Ω)

Note

- The specifications and design of this product are subject to change without notice.

LIMITED WARRANTY

FUNAI CORP will repair this product, free of charge in the USA in the event of defect in materials or workmanship as follows:

DURATION:
PARTS: FUNAI CORP. will provide parts to replace defective parts without charge for one (1) year from the date of original retail purchase. Certain parts are excluded from this warranty.
LABOR: FUNAI CORP will provide the labor without charge for a period of ninety (90) days from the date of original retail purchase.

Note: Any product sold and identified as refurbished or renewed carries a ninety (90) days labor and parts limited warranty.

LIMITS AND EXCLUSIONS:
THIS WARRANTY IS EXTENDED ONLY TO THE ORIGINAL RETAIL PURCHASER. A PURCHASE RECEIPT OR OTHER PROOF OF ORIGINAL RETAIL PURCHASE WILL BE REQUIRED TOGETHER WITH THE PRODUCT TO OBTAIN SERVICE UNDER THIS WARRANTY. This warranty shall not be extended to any other person or transferee.

This warranty is void and of no effect if any serial numbers on the product are altered, replaced, defaced, missing or if service was attempted by an unauthorized service center. This limited warranty does not apply to any product not purchased and used in the United States. This warranty only covers failures due to defects in material or workmanship which occur during normal use. It does not cover damage which occurs in shipment, or failures which are caused by repairs, alterations or products not supplied by FUNAI CORP., or damage, which results from accident, misuse, abuse, mishandling, misapplication, alteration, faulty installation, improper maintenance, commercial use such as hotel, rental or office use of this product, or damage which results from fire, flood, lightning or other acts of God.

THIS WARRANTY DOES NOT COVER PACKING MATERIALS, ANY ACCESSORIES (EXCEPT REMOTE CONTROL), ANY COSMETIC PARTS, COMPLETE ASSEMBLY PARTS, DEMO OR FLOOR MODELS.

FUNAI CORP. AND ITS REPRESENTATIVES OR AGENTS SHALL IN NO EVENT BE LIABLE FOR ANY GENERAL, INDIRECT OR CONSEQUENTIAL DAMAGES ARISING OUT OF OR OCCASIONED BY THE USE OF OR THE INABILITY TO USE THIS PRODUCT. THIS WARRANTY IS MADE IN LIEU OF ALL OTHER WARRANTIES, EXPRESS OR IMPLIED, AND OF ALL OTHER LIABILITIES ON THE PART OF FUNAI. ALL OTHER WARRANTIES INCLUDING THE WARRANTY OF MERCHANTABILITY AND FITNESS FOR A PARTICULAR PURPOSE, ARE HEREBY DISCLAIMED BY FUNAI AND ITS REPRESENTATIVES IN THE UNITED STATES. ALL WARRANTY INSPECTIONS AND REPAIRS MUST BE PERFORMED BY AN AUTHORIZED SERVICE CENTER.

THIS WARRANTY IS ONLY VALID WHEN THE UNIT IS CARRIED-IN TO AN AUTHORIZED SERVICE CENTER.

THE PRODUCT MUST BE ACCOMPANIED BY A COPY OF THE ORIGINAL RETAIL PURCHASE RECEIPT. IF NO PROOF OF PURCHASE IS ATTACHED, THE WARRANTY WILL NOT BE HONORED AND REPAIR COSTS WILL BE CHARGED.

IMPORTANT:
THIS LIMITED WARRANTY GIVES YOU SPECIFIC LEGAL RIGHTS. YOU MAY HAVE OTHER RIGHTS THAT VARY FROM STATE TO STATE. IF, AT ANY TIME DURING THE WARRANTY PERIOD, YOU ARE UNABLE TO OBTAIN SATISFACTION WITH THE REPAIR OF THIS PRODUCT, PLEASE CONTACT FUNAI CORP.

ATTENTION:
FUNAI CORP. RESERVES THE RIGHT TO MODIFY ANY DESIGN OF THIS PRODUCT WITHOUT PRIOR NOTICE.

WARRANTY STATEMENT REGARDING NON AUTHORIZED REPAIRS:
To obtain warranty service, you must take the product, or deliver the product freight prepaid, in either its original packaging or packaging affording an equal degree of protection, to any AUTHORIZED SERVICE CENTER. FUNAI CORP. will not reimburse you for any service done by unauthorized service providers without prior written approval.

To locate your nearest AUTHORIZED SERVICE CENTER or for general service inquiries, please contact us at:

FUNAI SERVICE CORPORATION
Tel: 1-877-39-Funai (1-877-393-8624)
www.funaiamerica.com
2200 Spiegel Drive, Groveport, OH 43125

For product recycling information, please visit - www.funaiamerica.com
Click on

TRADEMARK INFORMATION

Manufactured under license from Dolby Laboratories.
Dolby and the double-D symbol are trademarks of Dolby Laboratories.

is a trademark of DVD Format / Logo Licensing Corporation.

REGION CODES

This unit has been designed to play back DVD-video with region "1" or "ALL". You cannot play back DVD-video that are labeled for other regions. Look for the symbols on your DVD-video. If these region symbols do not appear on your DVD-video, you cannot play back the disc in this unit. The letter or number inside the globe refers to region of the world. A DVD-video labeled for a specific region can only be played back in the unit with the same region code.



See the Online Owner's Manual for details: www.funaiamerica.com